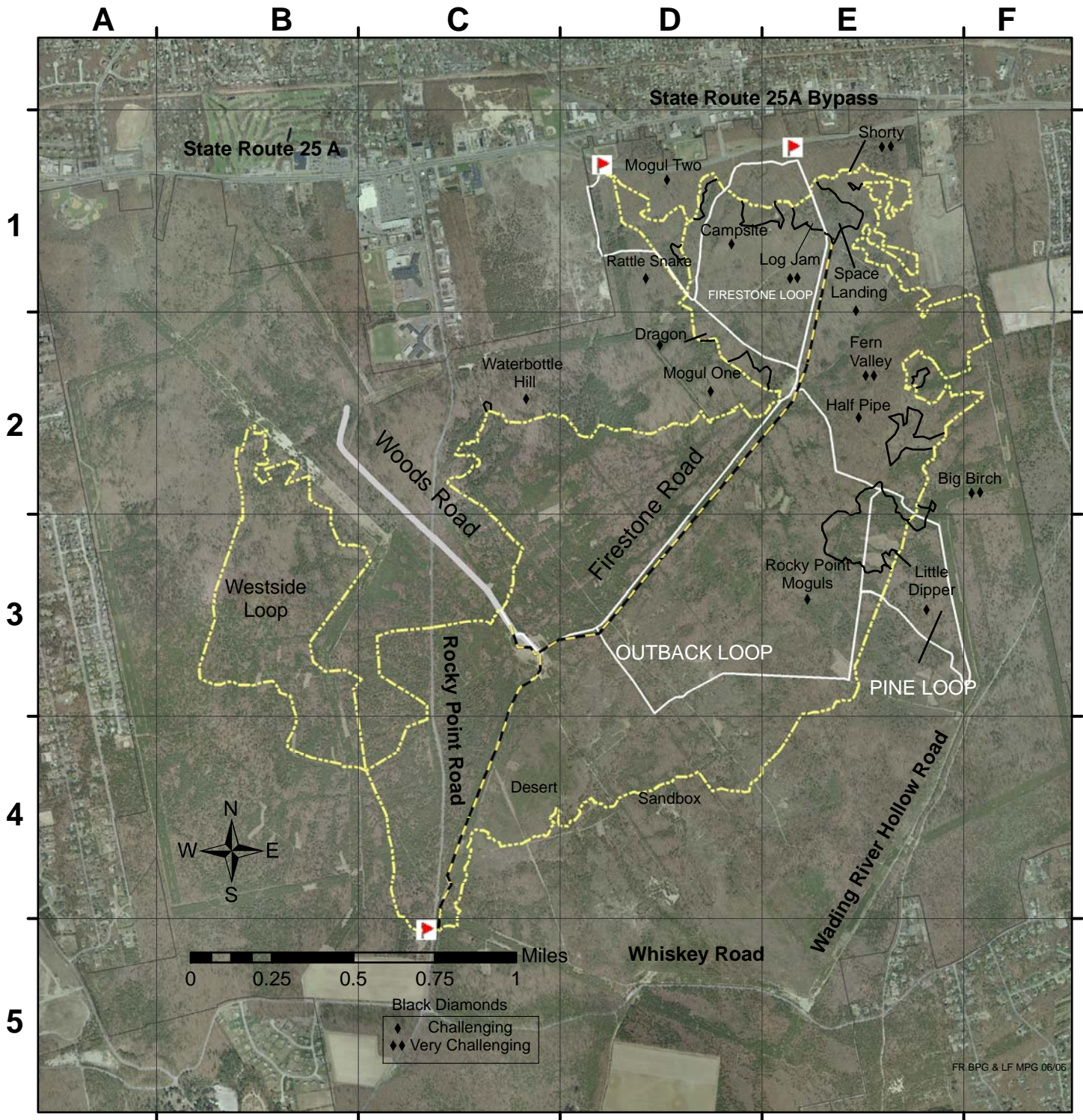




# NEW YORK STATE Department of Environmental Conservation Rocky Point Mountain Bike Trails



**Intermediate & Advanced Trails**

Challenging singletrack (one-way) with several uphill climbs and numerous turns.

Main Loop approx. 13 miles  
Optional Westside Loop 4 miles  
Advanced Black Diamond Loops always start and return to the Main Loop.

Follow the Yellow Trail Markers

**Family Trails (Beginner)**

Firestone Loop 3.0 miles  
Pine Loop 4.8 miles  
Outback Loop 5.8 miles

Follow White Trail Markers

**For any emergencies DIAL 911, request a Forest Ranger, if available. Give grid location as indicated on nearest trail marker (i.e. A2-10).**

Helmet, Eye Protection and DEC Permit Required  
Call 631-444-0273 For Information

**Legend**

- Family Trail(Beginner)
- Main Loop (Intermediate)
- Westside Loop (Intermediate)
- Black Diamond Trail (Advanced)
- Bike Trailhead Parking lots
- Bail-out Trail

FR BPG & LF MPG 06/06