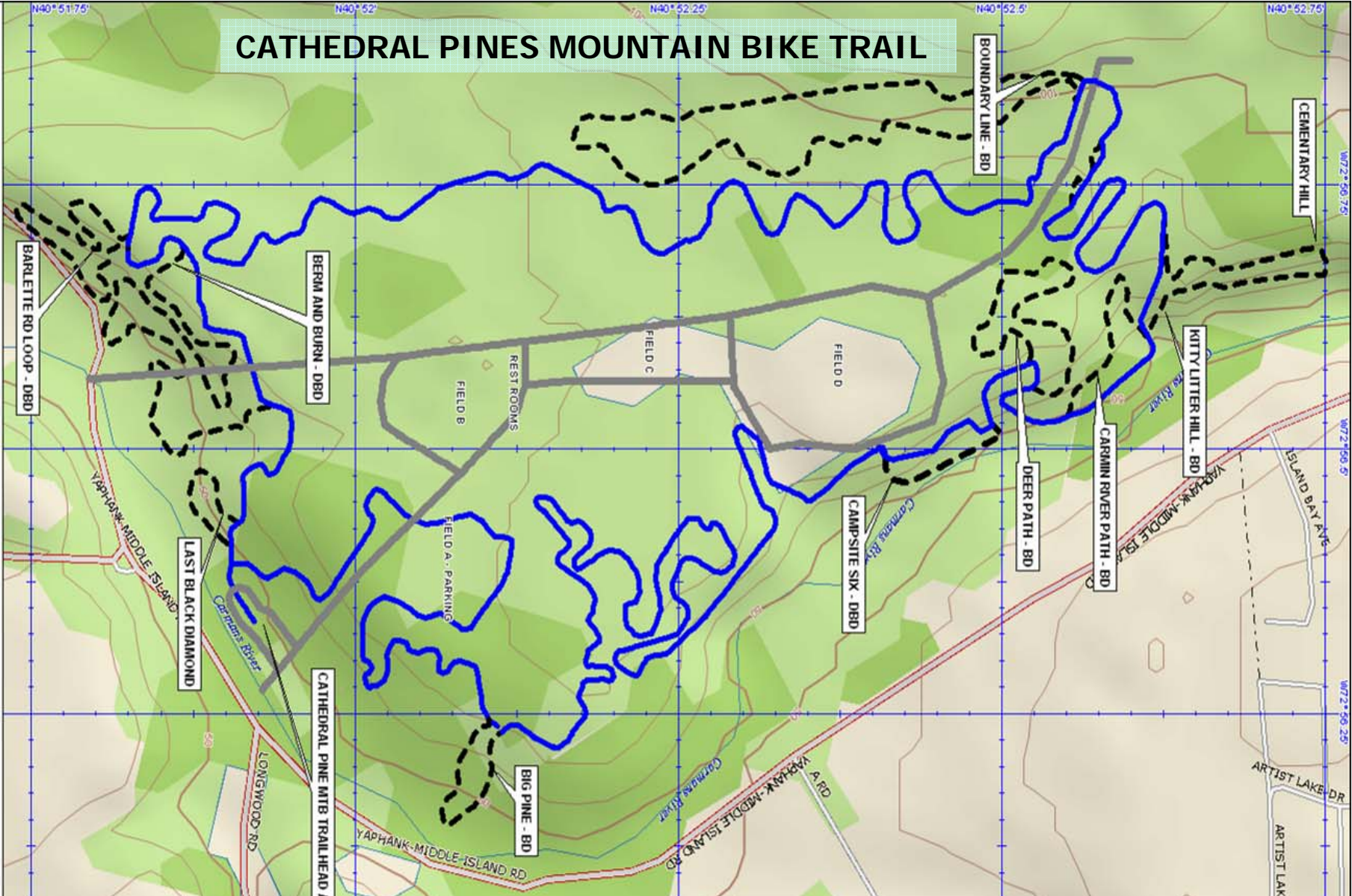
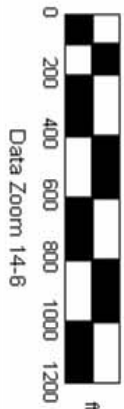


# CATHEDRAL PINES MOUNTAIN BIKE TRAIL

DELOIRME  
 Data use subject to license.  
 © 2006 DeLorme, Topo USA® 6.0.  
 www.delorme.com

MN (13.8° W)



**TRAIL IS ONE WAY – HELMETS AND EYE PROTECTION ARE REQUIRED**  
**BLUE OR SOLID LINE TRAIL IS THE MAIN LOOP – DISTANCE – 6.0 MILES**  
**BLACK OR DASHED LINE ARE MORE DIFFICULT AND ARE OPTIONAL – 3.0 miles**  
**MOUNTAIN BIKING IS AN INHERENTLY RISKY ACTIVITY. USE TRAILS AT YOUR OWN RISK.**  
**RIDE IN CONTROL AND WITHIN YOUR ABILITY AT ALL TIMES. BE RESPONSIBLE WHEN TRAILS ARE MUDDY. GIVE THE TRAILS A DAY TO DRY UP AFTER A RAIN. THIS TRAIL WAS BUILT BY AND IS MAINTAINED BY MEMBERS OF C.L.I.M.B. A SUFFOLK COUNTY GREEN KEY IS REQUIRED. FOR ALL EMERGENCY - CALL 911**

9/23/2009

rev.030107